

DRAFT SHROPSHIRE COUNCIL POLICY MAP
DRAFT S3 Bridgnorth Area

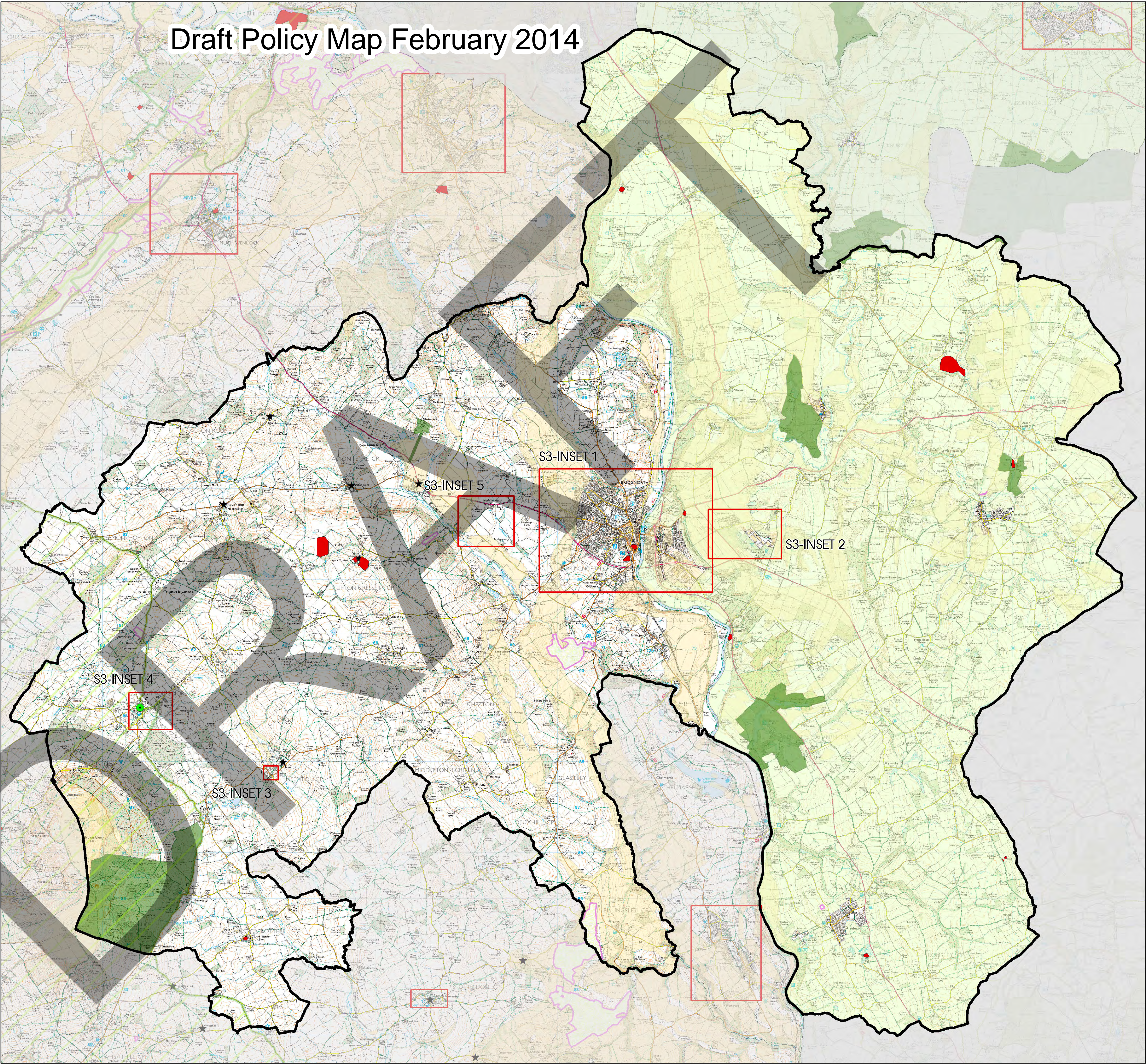
Key

- AONB
- Scheduled Ancient Monument
- Community Cluster
- Community Hub
- Inset
- RAMSAR
- SAC
- SSSi
- Registered Parks
- Greenbelt Adopted July 2006
- Mineral Safeguarding Area

© Crown copyright and database rights 2013
Ordnance Survey 100049049



Draft Policy Map February 2014



DRAFT SHROPSHIRE COUNCIL POLICY MAP
DRAFT Bridgnorth Area
S3-INSET 1

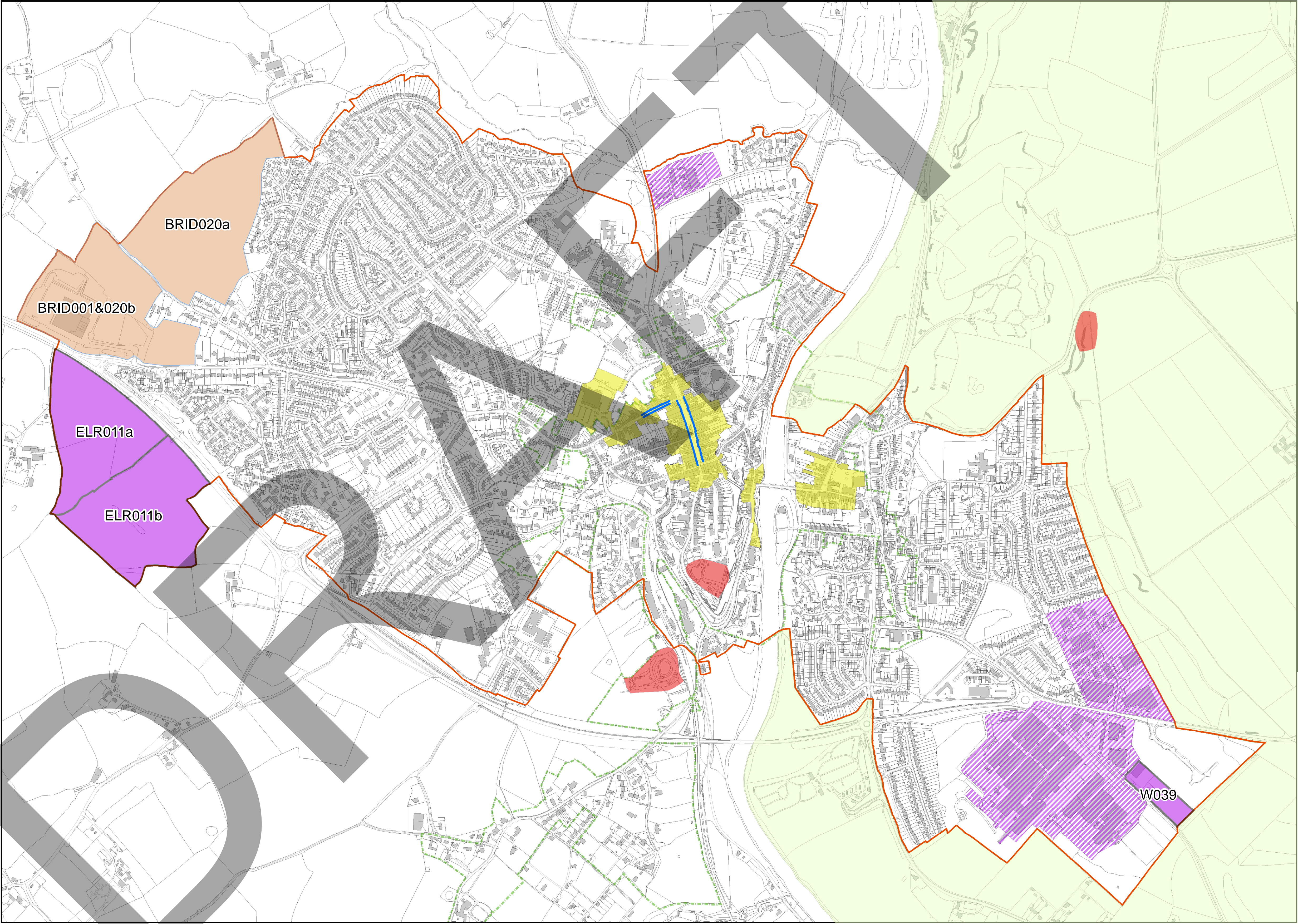
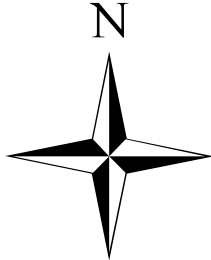
Key

- Housing
- Employment
- Protected Employment Area
- Primary Shopping Area
- Town Centre
- Scheduled Ancient Monument
- Development Boundary
- Registered Parks
- Greenbelt Adopted July 2006
- Conservation Area

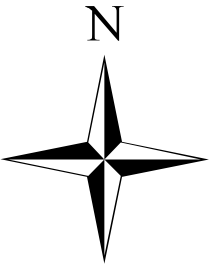
© Crown copyright and database rights 2014
Ordnance Survey 100049049



Draft Policy Map February 2014



SHROPSHIRE COUNCIL POLICY MAP
S3: Bridgnorth Area
INSETS 3, 4, 5.



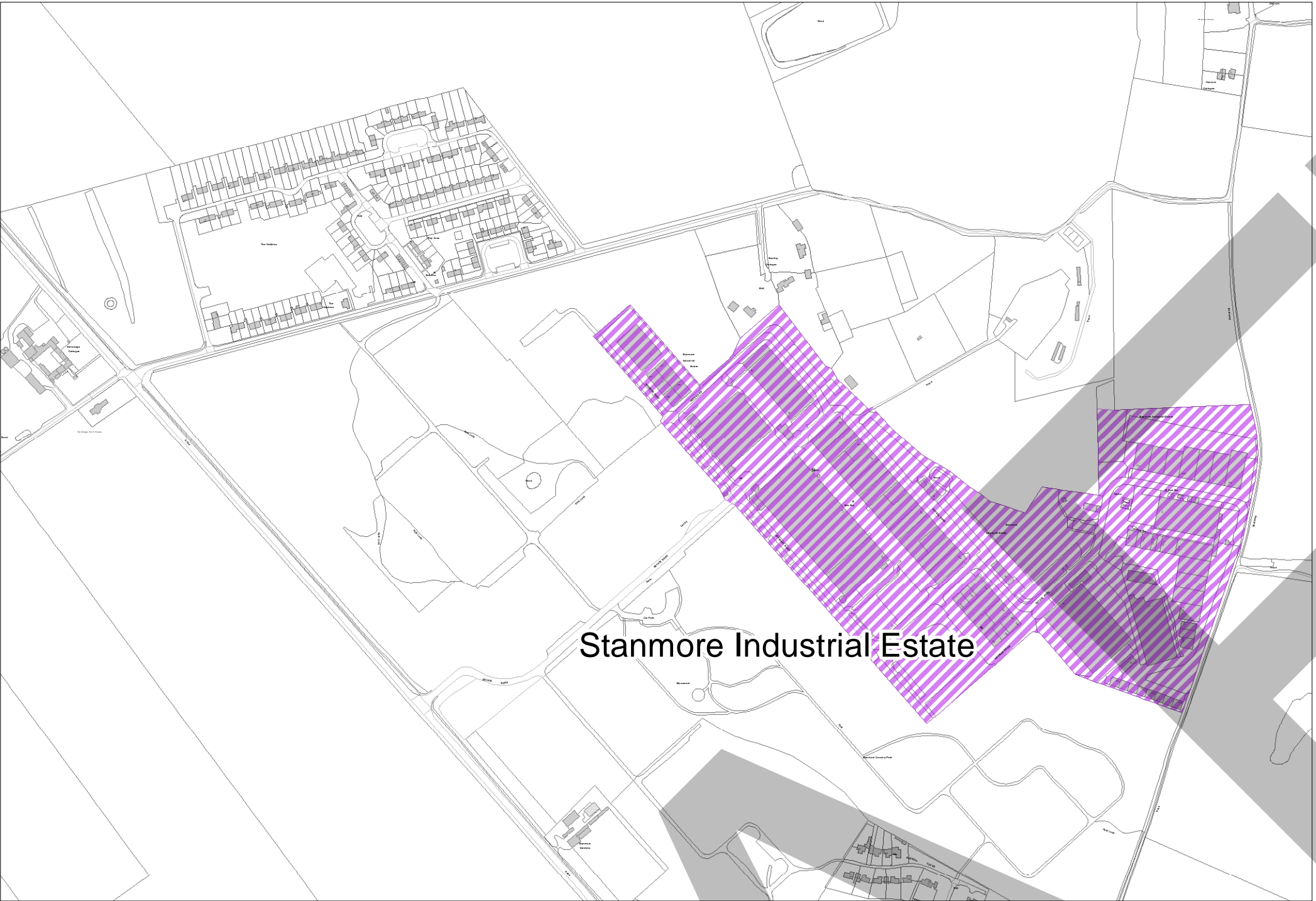
Key

- Housing
- Conservation Area
- Protected Employment Area
- Development Boundary
- Mineral Site Extension
- Existing Mineral Site

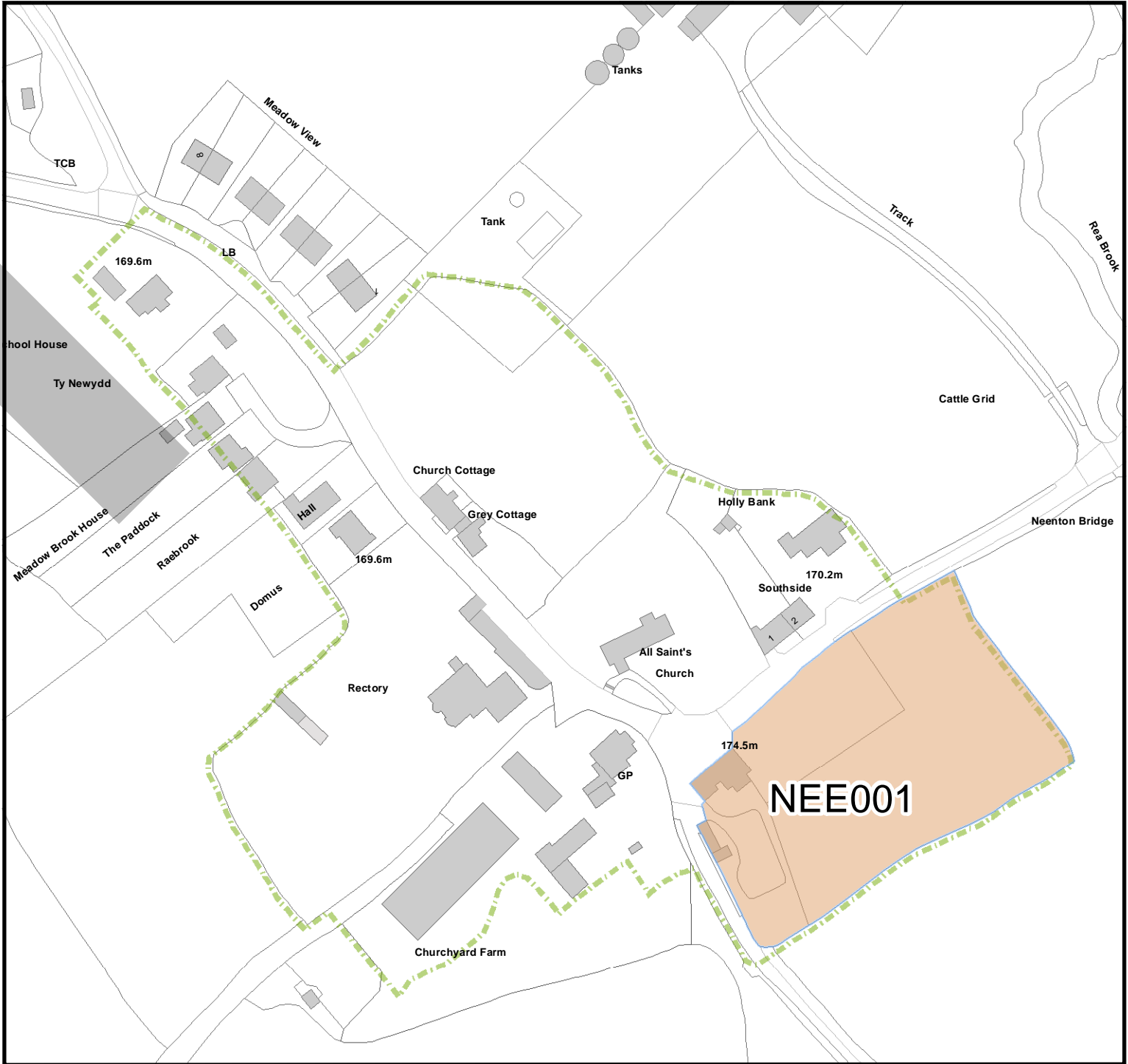
© Crown copyright and database rights 2014
Ordnance Survey 100049049



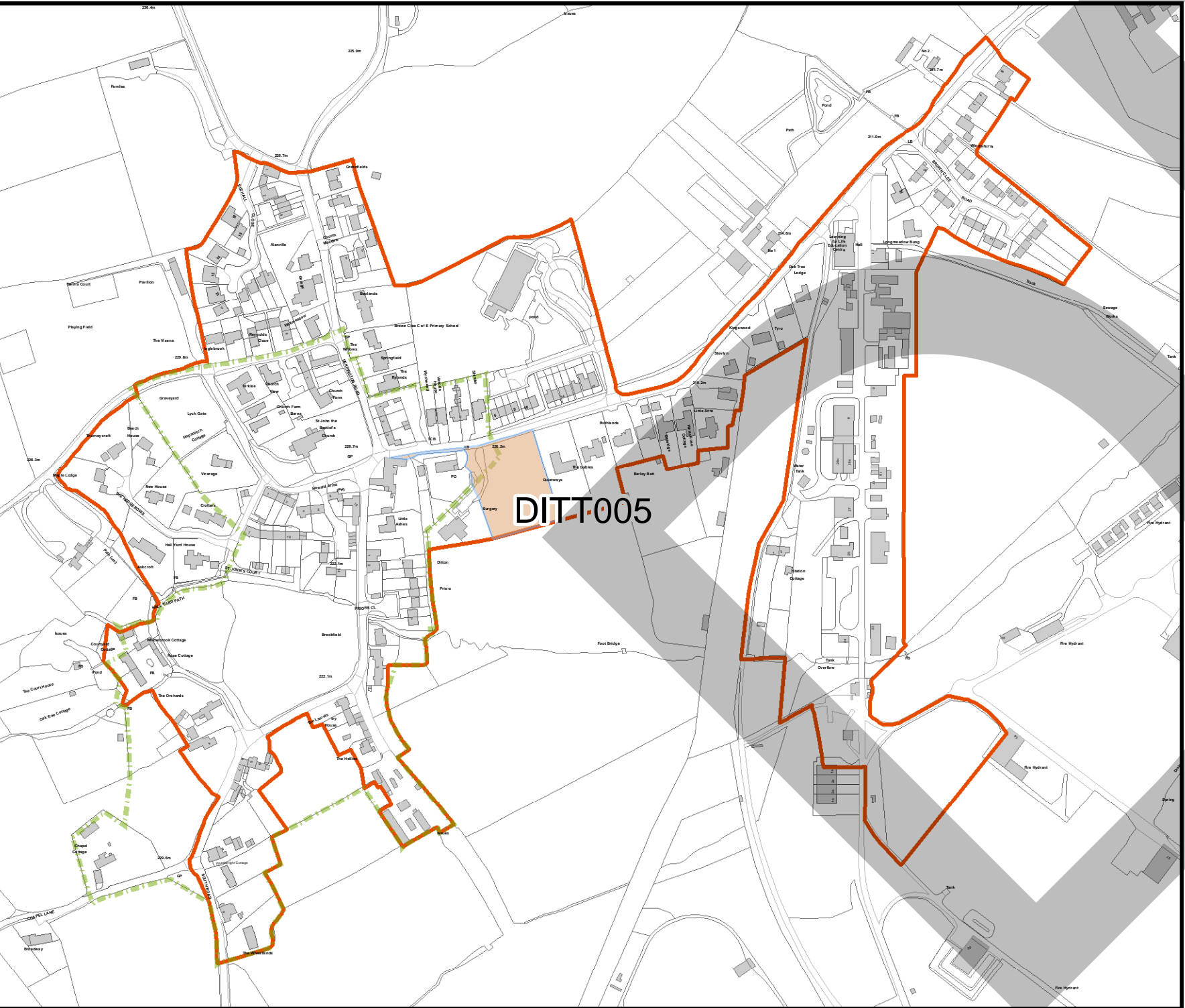
S3 Inset 2 The Hobbins & Stanmore Industrial Estate



S3 Inset 3 Neenton



S3 Inset 4 Ditton Priors



S3 Inset 5 Morville Minerals

